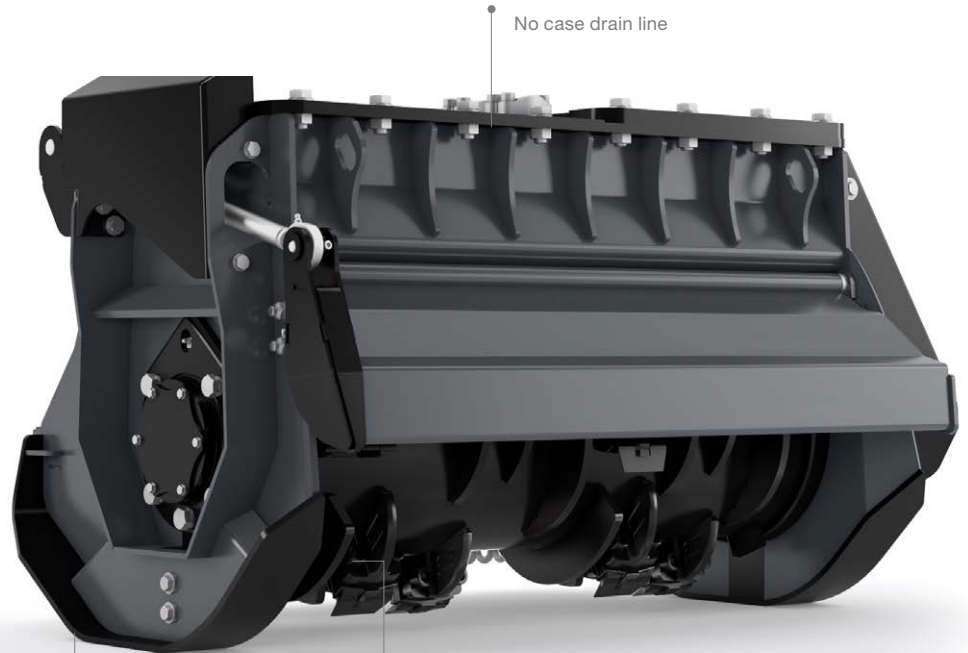


HIGH QUALITY. ROBUST. VERSATILE.

GRIZZLY M450e-900 FORESTRY MULCHER FOR EXCAVATORS

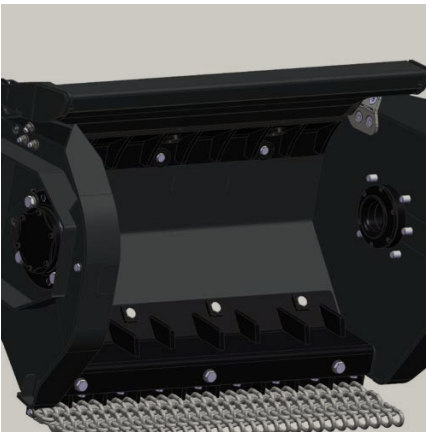
The excavator mulcher Grizzly M450e-900 with a working width of 900 mm (35.4 in) is a compact forestry mulcher for excavators in the 6-12 t class with a volume flow of 17 – 48 gpm (63–180 l/min)



No case drain line

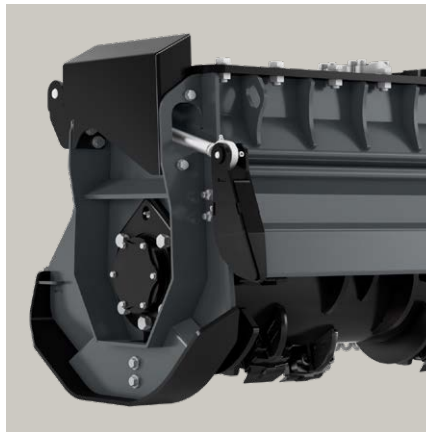
Wear-resistant skids and bolted liners provide additional protection for the housing

Rotor diameter: 450 mm
20x BCS tools
(or 24x UPTs tools)



ROBUST HOUSING

Wear-resistant skids and bolted liners protect the housing and increase the lifetime.



PROTECTION FLAP

The hydraulic flap provides additional protection when mulching.



PROVEN ROTOR TECHNOLOGY

Proven rotor technology with various BCS or UPTs tools possible, for the best mulching result.

Pinotti[®]

COMPACT AND POWERFUL

The mulcher is perfect for mulching trees and brush. Applications include forestry, maintaining roadsides, green areas and commercial and residential properties.



MAIN TECHNICAL BENEFIT

- Counter blades prevent the entry of too large of material and the blocking of the rotor through additional shredding.
- Available with or without flap, hydraulically controlled.
- Four hydraulic motor options (30, 40, 45, 73 cc) to cover the entire volume flow range.
- No case drain line required, so the machine can be easily attached to any excavator without additional modifications.
- The hoses to the cylinder are protected in the housing.

TECHNICAL DATA GRIZZLY M450e-900

Working width	35.4 in (900 mm)
Total width	48.9 in / 1,241 mm (30, 40, 45 cc) and 50.3 in und 1,278 mm (73 cc)
Weight*	1,058 lbs (480 kg)
Rotor diameter	17.7 in (450 mm)
Volume flow	17–48 gpm (63–180 l/min)
Tools	20x BCS or 24x UPTs
Heigh (with flap)	27.6 in (700 mm)
Depth (with flap)	30.3 in (770 mm)

* Weight depends on the configuration of the machine

Prinoth GmbH

Im Branden 15
88634 Herdwangen
Germany
Tel. +49 7557 92120
prinoth.germany@prinoth.com

Prinoth AG

Brennerstraße 34
39049 Sterzing
Italy
Tel. +39 0472 72 26 22
prinoth@prinoth.com

Locate your nearest sales and service points at vm.prinoth.com